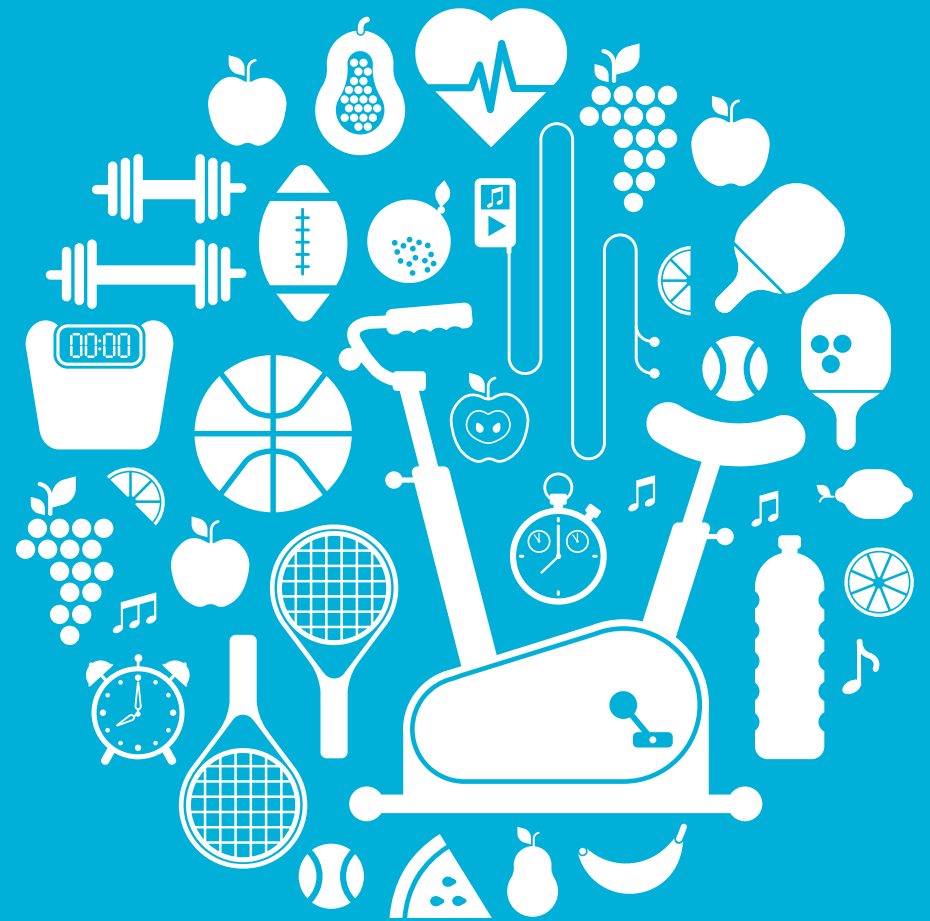


# Occupational Health Guideline for Preventing Weight Gain among Employees

a (cost-) effectiveness study



Lisanne Verweij

Occupational Health Guideline  
for Preventing Weight Gain among Employees

Lisanne Verweij

Body @ Work



**TNO**

**EMGO+**  
Institute for Health and Care Research

**BODY@WORK**

**BODY@WORK**